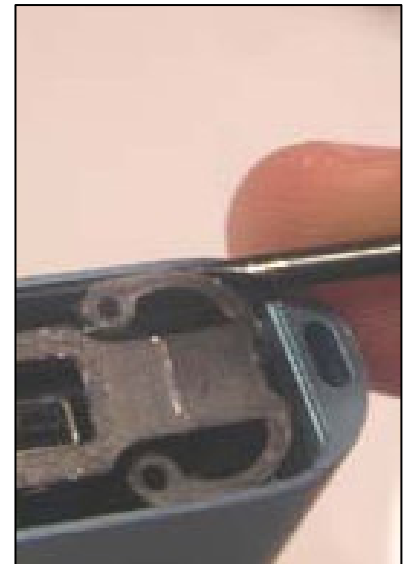


How to Install a Kokopelli Music Battery in an iPod Mini

A few words of advice before you start: Go slow! NEVER force something, because most likely it will break. If you do break something, or if something comes unplugged that shouldn't be, don't panic, just stay calm, and if you don't think you can fix it, just email us at info@kokopellimusic.us or use the "Contact Us" link and we will do our best to help you. If you decide you'd rather have us do the replacement for you, STOP, go to our website and purchase the "Installation Only" option, and we'll be happy to do the rest of the job for much less than it will cost you to replace your iPod. ☺

Tools required: 2 screwdrivers (included). Time required: 15 to 30 minutes.

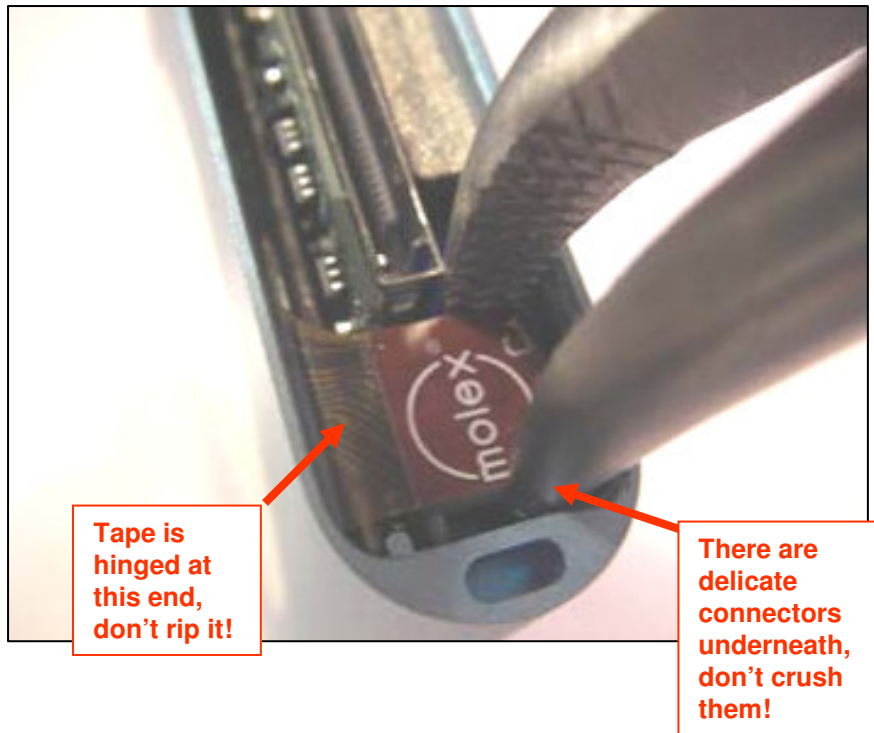
1. Turn off the iPod, and engage its Hold switch so it doesn't turn on while you're working on it. Ground yourself to discharge any static electricity.
2. Lay the iPod face up on a flat work surface. Gently insert the slot head screwdriver into the top as shown. It may take a few tries to get it in and pry it off. Remove the small screws underneath.
3. Now turn the iPod over and pry off the bottom cover. The best place to insert the screwdriver to pry off the cover is 1.5 cm from the end, under the firewire connector.
4. Under the bottom cover you should see a small metal plate with 4 prongs on each corner. Push the screwdriver under these, one at a time, to remove the bottom plate as shown.



5. This is the most delicate part of the whole operation. Very carefully and preferably using needle nosed pliers, gently pry up the small connector at the bottom of the main board – it may be labeled “Molex”. It’s hinged at one end.

If you don’t have needle nosed pliers, pry gently with the two small screwdrivers provided. Pry at the middle where it’s strongest, NOT at the edges.

Be very careful – pull gently so you don’t rip the tape, and squeeze gently so you don’t damage the delicate connectors underneath the tape.



6. Carefully slide the main board out of the iPod until the battery is exposed. Remove the connector and the battery and replace it with your new Kokopelli battery.

7. Gently slide the main board back into the iPod and carefully reconnect the Molex connector. Put the small screws back in and snap the bottom and top covers back on.



8. Turn on your iPod. Don't forget to fully charge your new battery before using it.

You're done – congratulations!

