

## How to Install a Kokopelli Music Battery in an iPod Video (5<sup>th</sup> Generation)

A few words of advice before you start: Go slow! NEVER force something, because most likely it will break. If you do break something, or if something comes unplugged that shouldn't be, don't panic, just stay calm, and if you don't think you can fix it, just email us at [info@kokopellimusic.us](mailto:info@kokopellimusic.us) or use the "Contact Us" link and we will do our best to help you. If you decide you'd rather have us do the replacement for you, STOP, go to our website and purchase one of our installation services, and we'll be happy to do the rest of the job for much less than it will cost you to replace your iPod. ☺

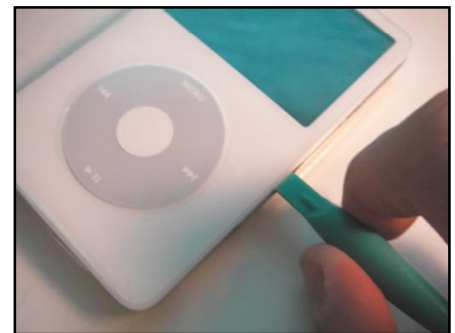
**These instructions are provided for informational purposes only. Use them at your own risk. Kokopelli Music is not responsible for any damage or injury resulting from use of these instructions.**

Tools required: 2 nylon pry tools (included). Time required: 15 to 30 minutes.

1. Turn off the iPod, and engage its Hold switch so it doesn't turn on while you're working on it. **Ground yourself to discharge any static electricity.**
2. Hold the iPod flat, with its face up, and insert the blade of the round-handled tool between the metal back and the acrylic lip of the iPod, creating a space large enough to insert the other tool.
3. Now insert the other tool and run it around the edge of the iPod, moving to the left as shown. As you move all the way around, the metal back should separate from the front.



*Occasionally an iPod is especially tight and won't separate easily. Keep trying – we've never encountered an iPod we couldn't open! If you wear out the nylon tools, try a light- or medium-weight guitar pick. Never use metal tools, as they will damage your iPod case. If you really get stuck, stop and order the "installation only" services from us on our website.*



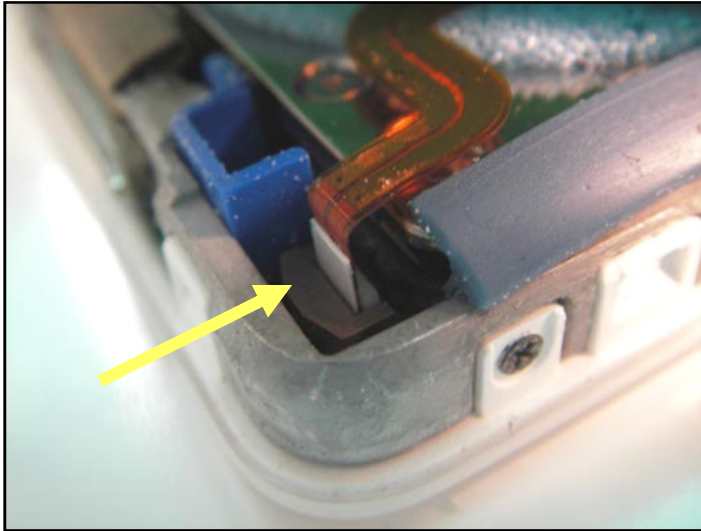
4. Flip the iPod over so the back (metal) part is face up.
5. Carefully pry the iPod open an inch or two, as shown in the picture at right.

DO NOT open the iPod too far, because there are delicate wires that will pull out or break if you do!

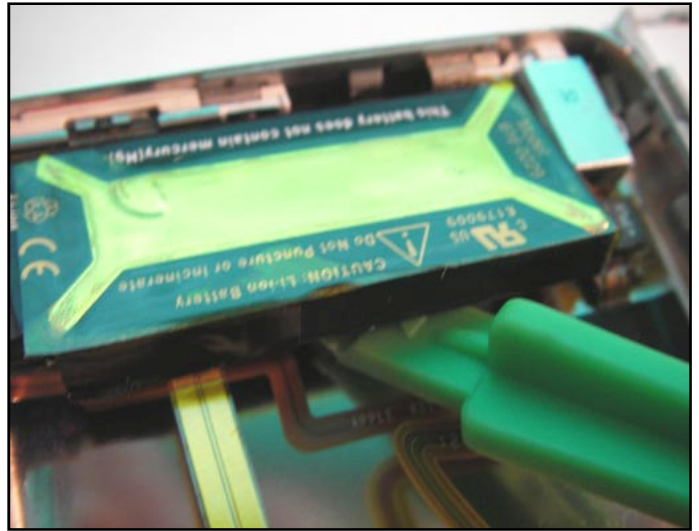


*Continued on next page...*

6. Remove the power connector near the bottom of the iPod. Notice the power connector is not attached permanently, so it should slide right out.



7. Carefully, use one of the nylon tools to remove the battery from the back plate. It will be stuck on with a soft glue, just pry it off slowly.



8. Attach the wire from your new Kokopelli battery to the power connector (as shown below), and seat the battery where the old one used to be.



9. Close up the back of the iPod making sure everything, including the Hold switch, is in the correct position.
10. Snap together the two parts of the iPod.
11. Turn on your iPod. Don't forget to fully charge your new battery before using it.



That's it, you're done - congratulations!