

How to Replace the LCD Screen on an iPod 4th Generation

A few words of advice before you start: Go slow! NEVER force something, because most likely it will break. If you do break something, or if something comes unplugged that shouldn't be, don't panic, just stay calm, and if you don't think you can fix it, just email us at info@kokopellimusic.us or use the "Contact Us" link and we will do our best to help you. If you decide you'd rather have us do the replacement for you, STOP, go to our website and purchase the "Installation Only" option, and we'll be happy to do the rest of the job for much less than it will cost you to replace your iPod. ☺

These instructions are provided for informational purposes only. Use them at your own risk. Kokopelli Music is not responsible for any damage or injury resulting from use of these instructions.

Tools required: 2 nylon tools (included); 1 small Torx (star head) screwdriver, included. Time required: 15 to 30 minutes.

1. Turn off the iPod, and engage its Hold switch so it doesn't turn on while you're working on it.

Ground yourself to discharge any static electricity.

2. Hold the iPod flat, with its face up, and insert the blade of the round-handled tool between the metal back and the acrylic lip of the iPod, 2½ inches from the top right side of the iPod, creating a space large enough to insert the other tool.

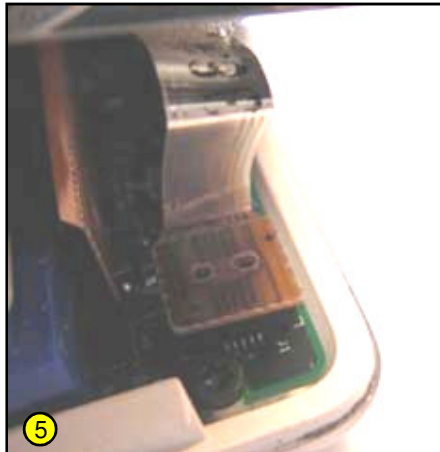


3. Now insert the other tool and run it around the edge of the iPod, moving to the left (clockwise). As you move all the way around, the metal back should separate from the front.

(Occasionally an iPod is especially tight and won't separate easily. Keep trying – we've never encountered an iPod we couldn't open! If you wear out the nylon tools, try a light- or medium-weight guitar pick. Never use metal tools, as they will damage your iPod case. If you really get stuck, stop and order the "installation only" services from us on our website.)

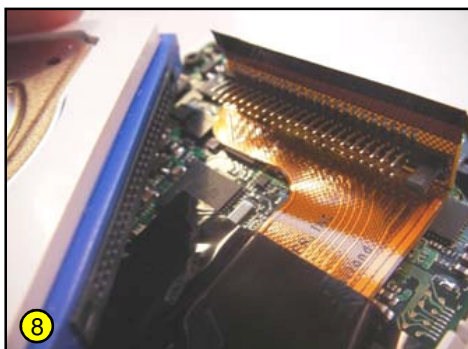
4. Flip the iPod over so the back (metal) part is face up.

5. Now comes the tricky part. You will see a small flat rectangular piece that's connected to a white square post on the green circuit board. VERY CAREFULLY, and preferably using needle-nosed pliers, wiggle the rectangular piece free from the square post.



6. Gently remove the metal back plate.

7. Lift up the hard drive and pull out the pin board connector from the back. Make sure you don't bend or break any of the pins.

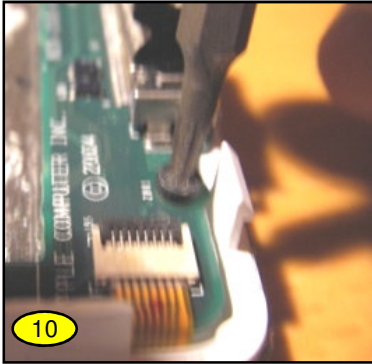


8. Detach the power connector in the bottom right corner of the circuit board with needle-nosed pliers.

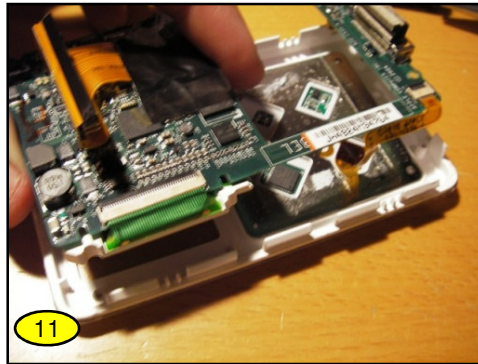
9. Untangle the power cable and carefully pry out the battery with one of the tools. It should be attached with a small amount of glue.



10. Using the Torx screwdriver, remove each of the 6 small screws from around the outside of the iPod.



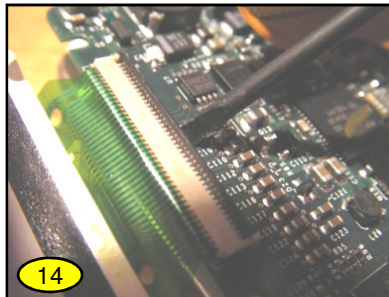
11. Disconnect the clickwheel ribbon cable from the lower left corner of the mainboard, by flipping up the small tab that holds the cable in place. Gently slide the end of the cable out from the cable connector.



12. Gently lift the main board out of the iPod about 1". The LCD screen should now be hanging from its ribbon cable.

13. Using a flat head screwdriver or one of the pry tools, carefully flip up the small tab connector on the upper left side of the main board, this will detach the LCD screen from the main board.

14. Gently remove the LCD screen. Insert the new LCD screen in its place. Insert the end of the LCD's ribbon cable into the open tab on the main board, then flip down the tab to hold it in place.



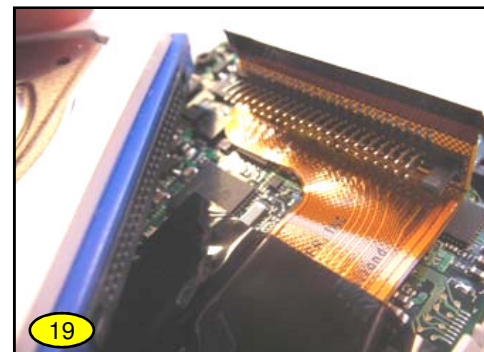
15. Replace the main board, making sure to tuck the new screen underneath it.

16. Reconnect the click wheel's ribbon cable by inserting the end of the cable into the open tab on the main board, then flip down the tab to hold it in place.

17. Re-insert the 6 small screws.

18. Attach the new battery (or reattach the old one) to the power connector and seat it where the battery used to be.

19. Reconnect the hard drive by reattaching the copper pin board to the back (from Step 7) and the flat rectangular piece (from Step 5).



20. Snap together the two parts of the iPod.



21. Turn on your iPod. Don't forget to fully charge your new battery before using it.



Everything should now work fine!!

If not, do a "hard reset": toggle the Hold switch on and off (slide it to Hold, then turn it off again), then press and hold the Menu and Center (Select) buttons simultaneously until the Apple logo appears, about 6 to 8 seconds.