

## How to Install a Kokopelli Music Battery in an iPod 3<sup>rd</sup> Generation

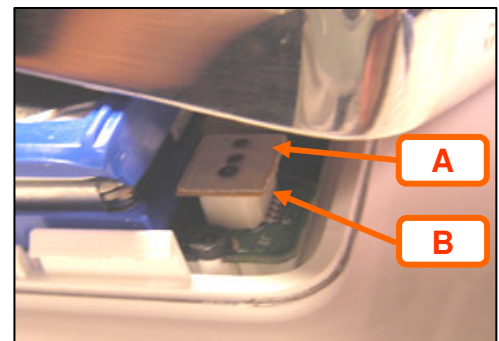
A few words of advice before you start: Go slow! NEVER force something, because most likely it will break. If you do break something, or if something comes unplugged that shouldn't be, don't panic, just stay calm, and if you don't think you can fix it, just email us at [info@kokopellimusic.us](mailto:info@kokopellimusic.us) or use the "Contact Us" link and we will do our best to help you. If you decide you'd rather have us do the replacement for you, STOP, go to our website and purchase the "Installation Only" option, and we'll be happy to do the rest of the job for much less than it will cost you to replace your iPod. ☺

Tools required: 2 nylon tools (included). Time required: 30 to 45 minutes.

1. Turn off the iPod, and engage its Hold switch so it doesn't turn on while you're working on it. Ground yourself to discharge any static electricity.
2. Hold the iPod flat, with its face up, and insert the blade of the round-handled tool between the metal back and the acrylic lip of the iPod, creating a space large enough to insert the other tool. The best starting point is usually 2½ inches from the top right side of the iPod.
3. Now insert the other tool and run it around the edge of the iPod, moving to the left as shown below. As you move all the way around, the metal back should separate from the front.

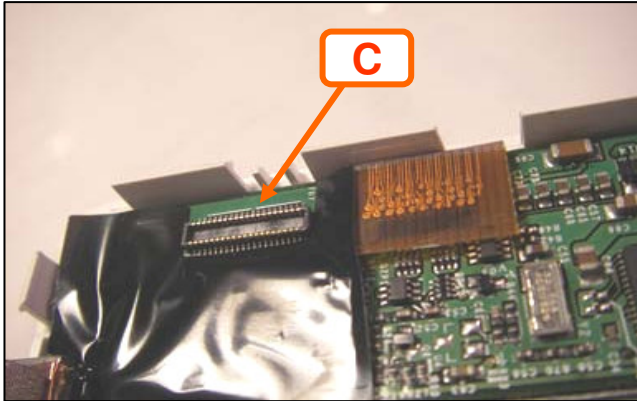
*(Occasionally an iPod is especially tight and won't separate easily. Keep trying – we've never encountered an iPod we couldn't open! If you wear out the nylon tools, try a light- or medium-weight guitar pick. Never use metal tools, as they will damage your iPod case. If you really get stuck, stop and order the "installation only" services from us on our website.)*

4. Flip the iPod over so the back (metal) part is face up.
5. Now comes the tricky part. You will see a small flat rectangular piece ("A" in picture at right) that's connected to a white square post ("B") on the green circuit board. VERY CAREFULLY, and preferably using needle-nosed pliers, wiggle the rectangular piece A free from the square post B.

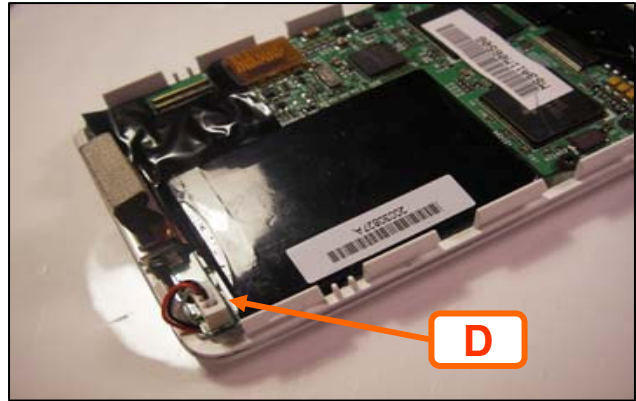


Continued on next page...

6. Gently remove the metal back plate.
7. Lift up the hard drive and pull the flat copper ribbon gently from its base. In the picture below you'll see the base ("C") after the ribbon and hard drive have already been removed.



8. Detach the power connector in the bottom right corner of the circuit board ("D" in picture below) with needle-nosed pliers.
9. Untangle the power cable and lift out the battery.



10. Attach your new Kokopelli battery to the power connector and seat it where the old one used to be.
11. Reconnect the hard drive by reattaching the copper ribbon cable to the connector shown in Step 7.



12. Reconnect the rectangular piece and post that you disconnected in Step 5.
13. Make sure that the position of the Hold switch matches the position of the toggle switch that it controls. If you don't do this, you may break the toggle when you put the iPod back together.



14. Snap together the two parts of the iPod.



15. Turn on your iPod. Don't forget to fully charge your new battery before using it.



That's it, you're done - congratulations!